



CONTRACT PANEL FABRICS

Copa
Equal

MARYLAND CORRECTIONAL ENTERPRISES

7275 Waterloo Road
Jessup, Maryland 20794
410-540-5400
Fax: 410-540-5569
www.mce.md.gov

COPA

EQUAL



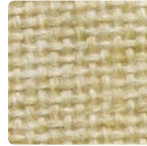
143-017
Smith Point



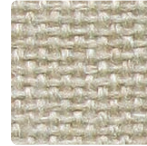
EQ380
Quartz



143-007
Hermosa



EQ130
Wheat



EQ758
Desert Sand



143-009
Bryce Canyon



EQ748
Bone



EQ460
Buff



143-014
Balboa



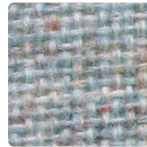
EQ757
Stream



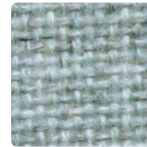
EQ796
Moleskin



143-004
Huron



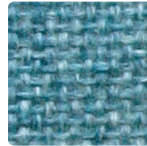
EQ401
Blue Neutral



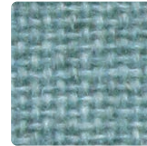
EQ539
Bleu Papier



143-026
Cape May



EQ150
Wedgewood



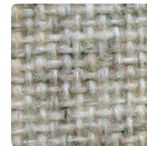
EQ175
Crystal Blue



143-006
Heartland



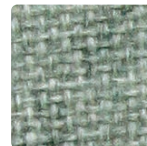
EQ538
Silver Papier



EQ394
Opal



EQ406
Silver Neutral



EQ238
Grey Mix

TECHNICAL INFORMATION

Contract Panel Fabrics

* ACT® Registered Certification Marks

Pattern 54"	Content and Backing	GREENGUARD Certified	Weight/ Linear Yd	Pattern Repeat	Finish	Light Fastness	Flammability	Cleaning Code
COPA <i>Directional</i>	100% Recycled Polyester (52% Pre-/48% Post-Consumer) Backing: None	Gold Certified	11.5 oz.	None	None	40 hours	ASTM E84 Class 1 or A	WS
EQUAL	100% Post-Consumer Recycled Polyester Backing: None	Gold Certified	16 oz.	None	None	40 hours	ASTM E84 Class 1 or A Cal. 117-E	WS

REDUCED ENVIRONMENTAL IMPACT

Recycled Content

GREENGUARD Gold Certified products are tested for low chemical emissions to standard UL 2818. For more information, visit UL.com/gg.



CLEANING INFORMATION

WS: Water/Solvent Cleaner – Spot clean, with a mild solvent, an upholstery shampoo, or the foam from a mild detergent. When using a solvent or dry cleaning product, follow instructions carefully and clean only in a well-ventilated room. Avoid any product that contains carbon tetrachloride or other toxic materials. With either method, pretest a small area before proceeding.

For detailed care and cleaning information for each pattern, please refer to the Mayer Fabrics website or contact customer service.

ADDITIONAL INFORMATION


Memo Samples: Please keep this card intact. Individual memo samples are available. Please contact MCE or refer to the MCE website.

Fabric Color Matching: MCE always attempts to ship a satisfactory commercial match. Because of industry standard dye lot variation, colors may not match exactly.

Digital Swatch Card Color Matching: Due to color variations on different monitors and color printers, actual swatch colors may vary slightly.

Specifications: Specifications are correct at the time of printing. Current specifications are available on our web site.

For information or assistance with products or services, call us at 410.540.5400 or refer to our website, www.mce.md.gov.

 This 100% polyester panel fabric is included in the Underwriters Laboratory Fabric Recognition Program. Additional testing of the U.L. recognized component fabric is not required on approved panels from participating manufacturers.

